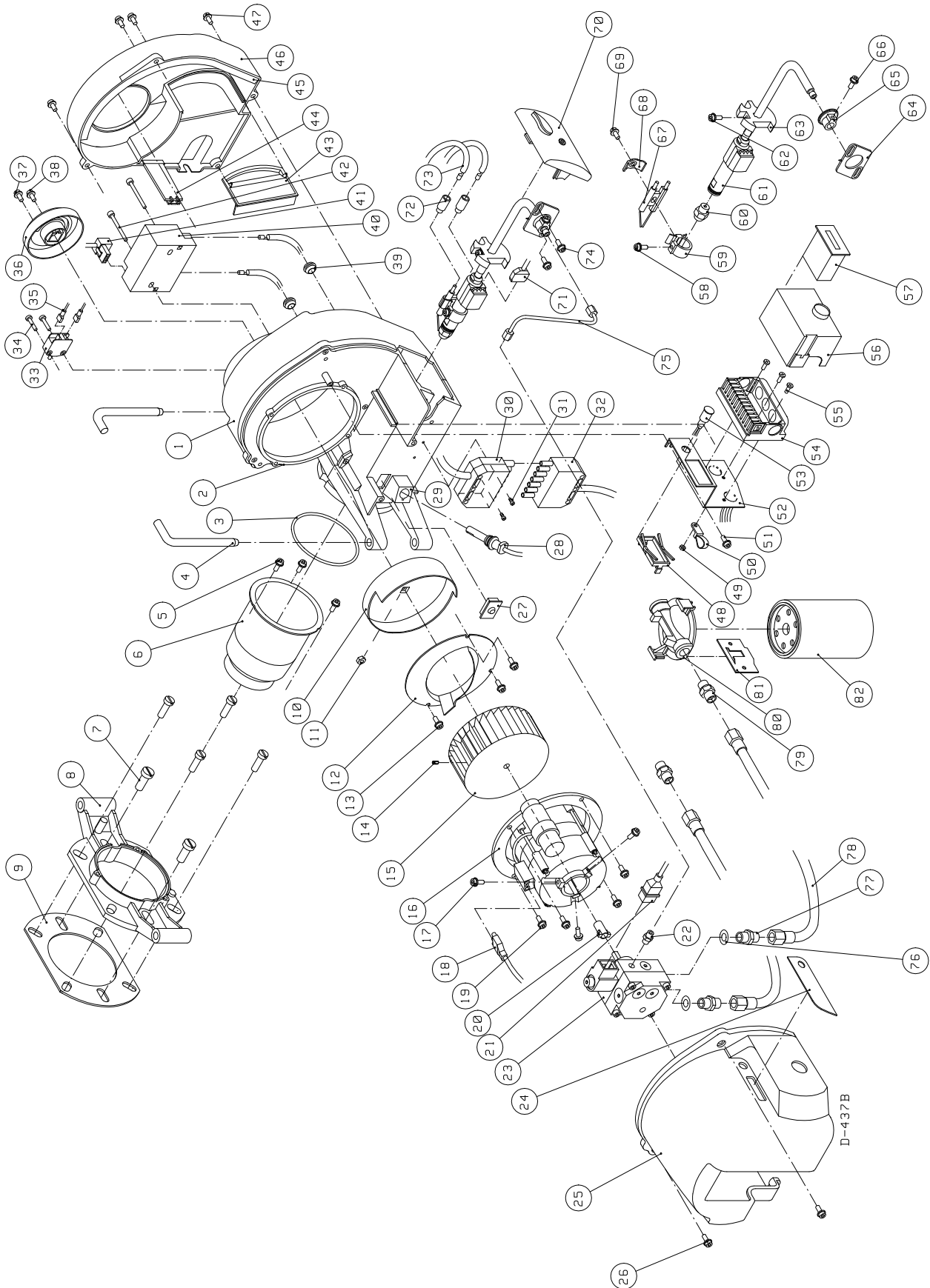


3. Burner Technical Data

3.1. Exploded View (Junior Pro 1 LJ10)



3.2. Parts List

		PCs
1	Burner housing	1
2	Name plate	1
3	Gasket	1
4	Hinge pin	2
5	Fixing screw for combustion head	3
6	Combustion head	1
	J10	
	J18	
	J20	
	J45	
	J50 with adjustment ring	
7	Fixing screw for mounting flange	
	M10 x 25	2 and/or
	M8 x 25	4
8	Mounting flange	1
9	Flange gasket	1
10	Air adjustment ring	1
	Pro 1: 1/2-opening	
	Pro 2: 1/1-opening	
11	Fixing nut for adjustment ring	1
12	Air cone	1
13	Fixing screw for air cone	3
14	Fixing screw for fan wheel	1
15	Fan wheel	1
	Pro 1: Ø 120 x 52	
	Pro 2: Ø 133 x 52	
16	Motor	1
17	Fixing screw for oil pump	3
18	Plug connector for motor	1
19	Fixing screw for motor	4
20	Oil pump coupling	1
21	Plug connector for oil pump	1
22	Nipple for pressure pipe	1
23	Oil pump	1
24	Cover plate for motorbox	1
25	Motorbox	1
26	Fixing screw for motorbox	2
27	Grommet for preheater cable	1
28	Flame detector (photo resistor)	1
29	Holder for flame detector	1
30	Plug connector, socket	1
31	Fixing screw for socket	2
32	Plug connector, plug-in part	1
33	Limit switch	1
34	Fixing screw for limit switch	2
35	Limit switch cable	2
36	Air setting scale	1
37	Fixing screw for air setting	1
38	Fixing screw for air setting scale	1
39	Cable sleeve for ignition cable	2
40	Ignition transformer	1
41	Plug connector for ignition transformer	1
42	Fixing screw for ignition transformer	2
43	Self-closing air flap	1
44	Front plate	1
45	Insulation for air intake	1

	PCs	
46	Air intake	1
47	Fixing screw for air intake	4
48	Clamp for run hour counter, optional extra	1
49	Locking nut for grommet	1
50	Grommet	3
51	Fixing screw for control unit bracket	1
52	Control unit bracket	1
53	Signal lamp indicating readiness for operation	1
54	Baseplate for control unit	1
55	Fixing and earth screws for control unit	3
56	Control unit	1
57	Run hour counter, optional extra	1
58	Fixing screw for ignition electrode holder	1
59	Ignition electrode holder	1
60	Nozzle	1
61	Preheater + nozzle conduit	1
	Pro 1: FPHB5	
	Pro 2: FPHB10	
	/ Nozzle holder + nozzle conduit, without preheating	
62	Fixing screw for nozzle conduit holder	1
63	Nozzle conduit holder:	1
	J10, J18, J20, J45, J50, LJ10, LJ18: Ø 10	
	LJ20, LJ45, LJ50: Ø 18,5	
64	Cover plate	1
65	Eccentric piece	1
66	Locking screw for eccentric piece	1
67	Ignition electrodes	1
68	Ignition electrode holder	1
69	Locking screw for ignition electrode holder	1
70	Sight glass	1
71	Plug connector for preheater	1
72	Protective sleeve for ignition cable nipple	2
73	Ignition cable	2
74	Fixing screw for cover plate	2
75	Pressure pipe	1
76	Gasket ring for oil hose nipple	2
77	Nipple for oil hose	2
78	Oil hose	2
79	Nipple for oil hose	2
80	Filter cover	1
81	Bracket for filter	1
82	Filter	1

3.3. General

- burner types:

• without preheating	• with preheating
Junior Pro 1	Junior Pro 1
J10	LJ10
J18	LJ18
Junior Pro 2	Junior Pro 2
J20	LJ20
J45	LJ45
J50	LJ50
- the burner can be hinged to both sides
- the standard burner must be installed in such a position, that the motor shaft lies horizontally; but the burner must not, however, be installed upside down. In the case the burner must be installed upside down, a separate installation set with instructions must be ordered from the manufacturer.
- burner control unit internally connected
- safety switch (limit switch) on the hinged burner housing
- stepless adjustable air regulation
- oil pump atomizing pressure 800 - 1400 kPa (8 - 14 bar), factory setting approx. 10 bar
- electrical connection with a plug connector
- standard equipment for two pipe system
- recommended nozzle types:
 - solid 45° - 60° (Junior Pro 1 J10, J18, LJ10, LJ18)
 - solid 60° (Junior Pro 2 J20, J45, J50, LJ20, LJ45, LJ50)
- NO_x-class 2

Optional extra

- boiler dual thermostat
 - regulating thermostat max. 95 °C
 - limit thermostat 100 °C
- pocket for thermostat
- run hour counter
- deaerator Tigerloop
- oil flow meter
- Oilon Plus filter and deaerator unit:
 - filter
 - deaerator
 - pressure gauge
 - protective cover
 - multi-function meter, optional extra